



CHATTERTON | REES

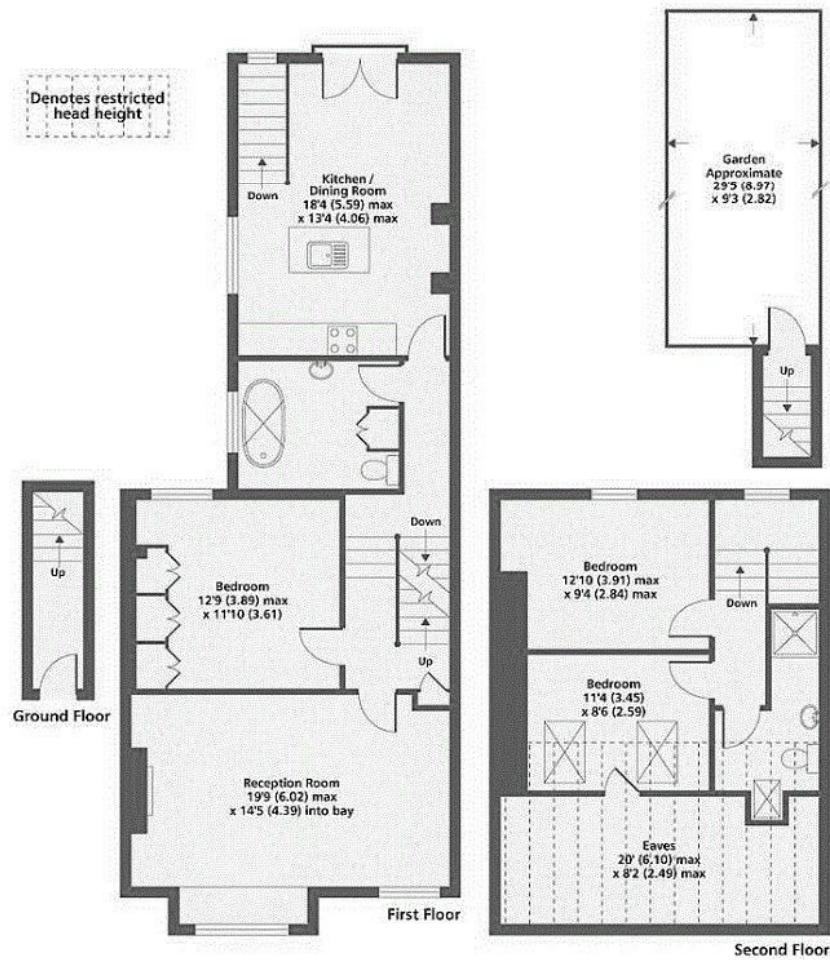


158 Fulham Palace Road, London, SW6 6TL

Asking price £915,000

We are delighted to bring to the market this bright, airy and spacious split level Victorian conversion flat, with stunning period features like original stained glass windows and Victorian mosaic tiles in the entrance hall which compliment the new modern additions very well. The flat has three bedrooms, two beautiful bathrooms and a stunning large reception room. The kitchen at the rear of the property is modern and has space for a dining table too. Doors lead outside into a lovely, well maintained garden space with established plants. This property has an abundance of natural light all throughout the day. The flat is close to Bishops Park and the river Thames, with great coffee shops and restaurants close by.

Floor Plan



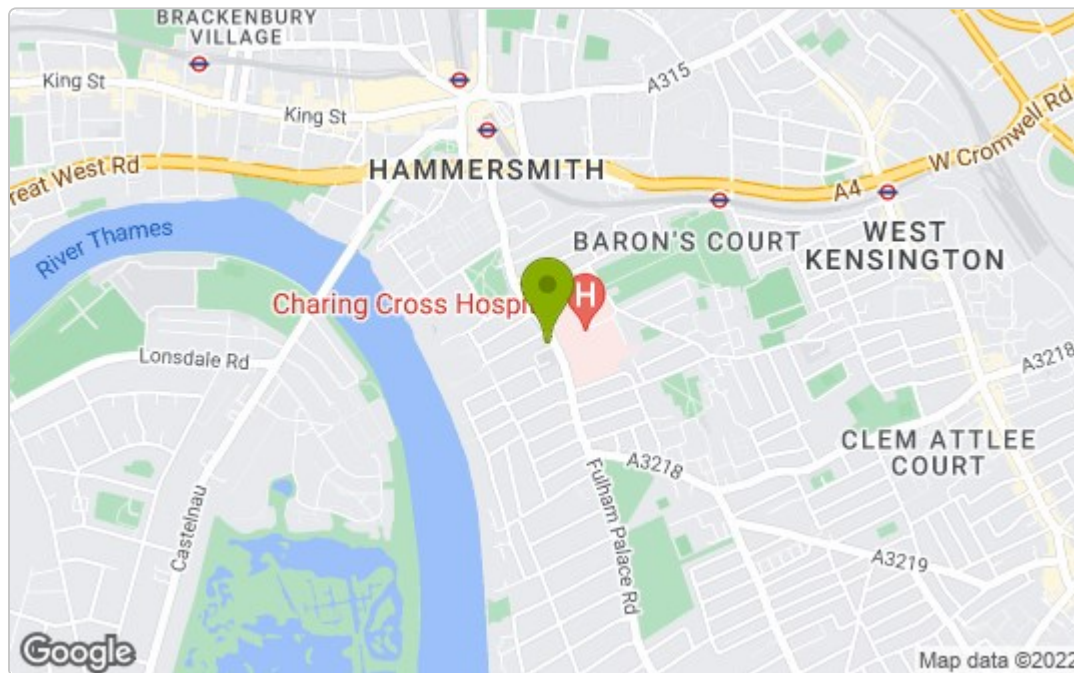
Fulham Palace Road SW6

Gross Internal Floor Area 1394 sqft 129.5 sqm (includes restricted head height)

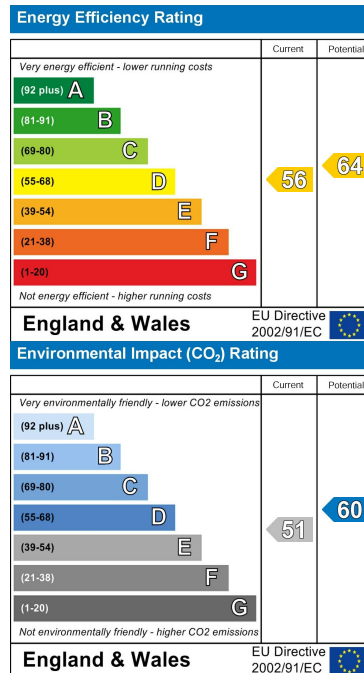
Copyright nichecom.co.uk 2017 REF : 196782

Whilst every attempt has been made to ensure the accuracy of the floor plan contained here, measurements of doors, windows and rooms are approximate and no responsibility is taken for any error, omission or misstatement. These plans are for representation purposes only as defined by RICS Code of Measuring Practice and should be used as such by any prospective purchaser. Specifically no guarantee is given on the gross internal floor area of the property if quoted on this plan and any figure given is for initial guidance only and should not be relied on as a basis of valuation.

Area Map



Energy Efficiency Graph



These particulars, whilst believed to be accurate are set out as a general outline only for guidance and do not constitute any part of an offer or contract. Intending purchasers should not rely on them as statements of representation of fact, but must satisfy themselves by inspection or otherwise as to their accuracy. No person in this firm's employment has the authority to make or give any representation or warranty in respect of the property.